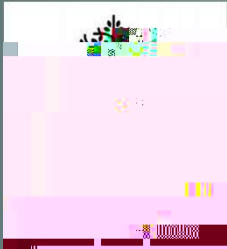
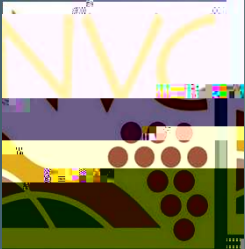
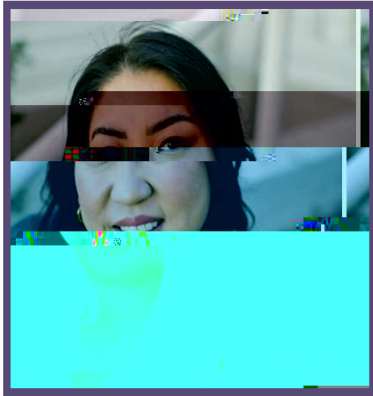




High School Breakfast





Cristine Tapia
Manager

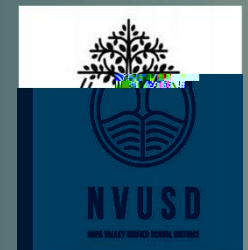
- **AB359 (Helden) vetoed 9/27/24**

- **CDEFunds**

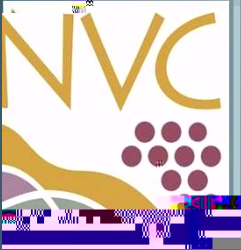
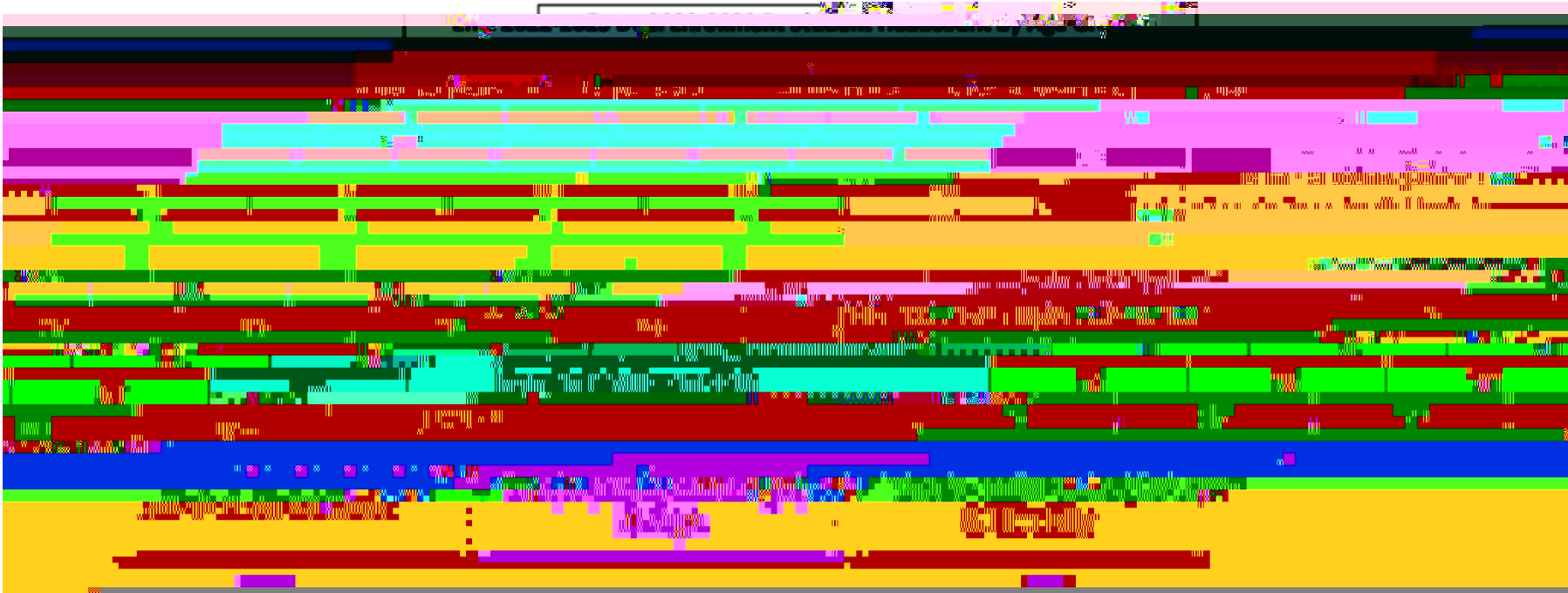
 - CCAP and Middle College/Early College Grants**

 - Golden State Pathways Program (GSPP) Grant**

- **CIP Dual Enrollment Access Gap Tool**



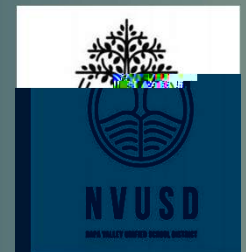
m m F



m

m

F



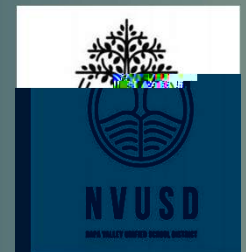
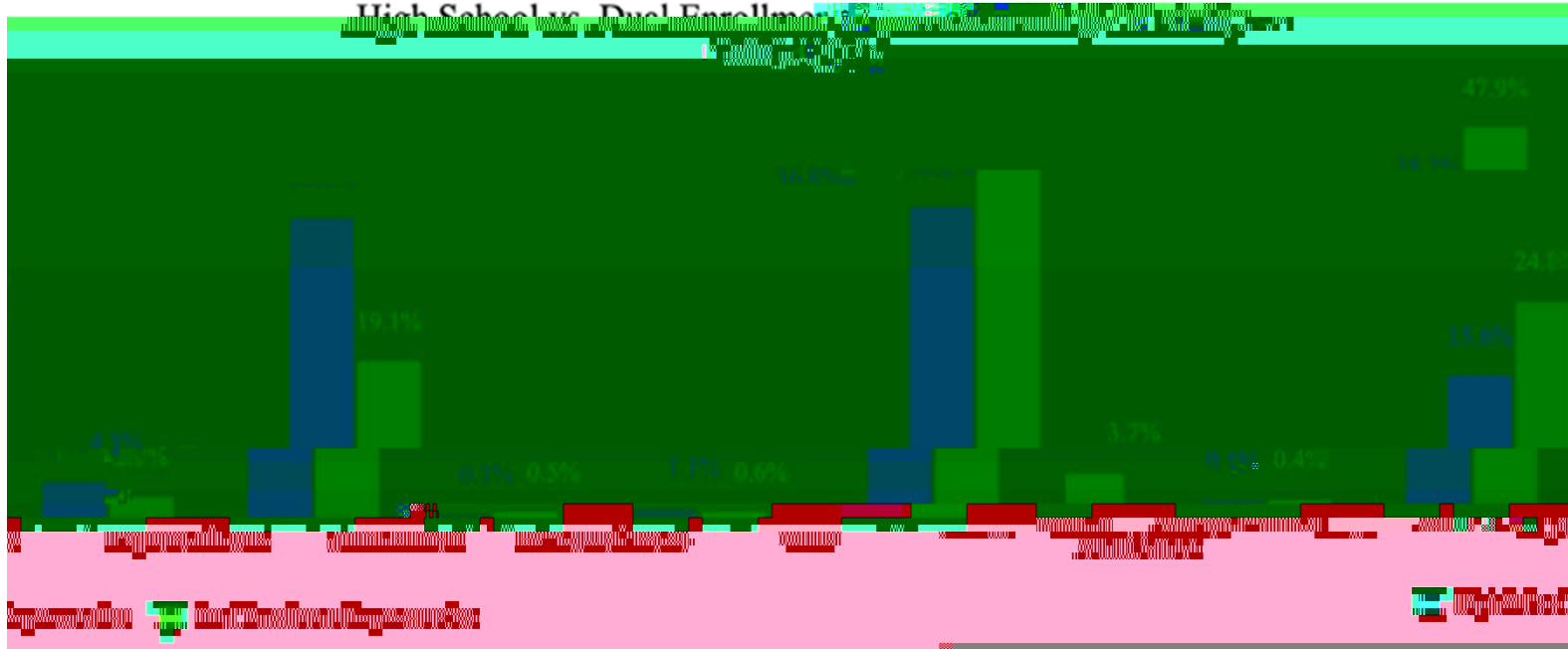
m

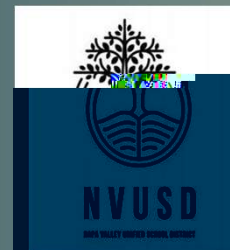
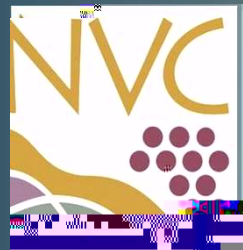
m

F



High School vs. Dual Enrollment

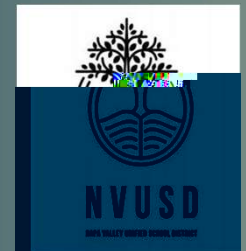
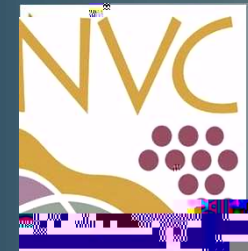




Spring 2025

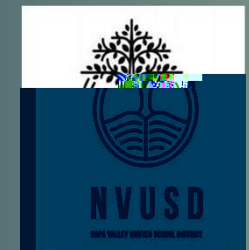
- **650 high school students expected to enroll**
- **22 CCAP classes will be scheduled**
- **Special Permit to Attend**

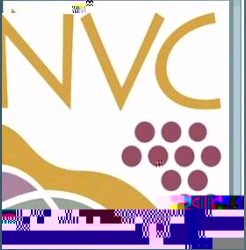
Students who have completed a CCAP or Non-CCAP permit to register for Summer 2024 or Fall 2024 classes will be exempt from completing a new permit to register for Spring 2025 classes.

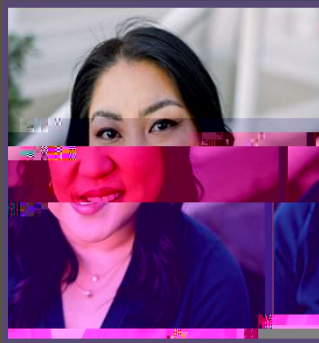
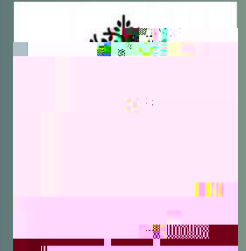


M M

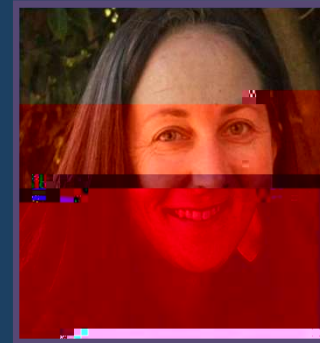
- **HS alignment with college minimum qualifications to teach in specific disciplines**
- **Stipend for HS instructors assigned to teach CCAP classes**
- **Funds to support CCAP faculty professional development**







cristine.tapia@napavalley.edu



mready@nvsud.org